

Ladder and Step Stool Safety for Everyone



CLIMB ON

Dave Francis, National Safety Director

dave@ladders.com

www.littlegiantladders.com



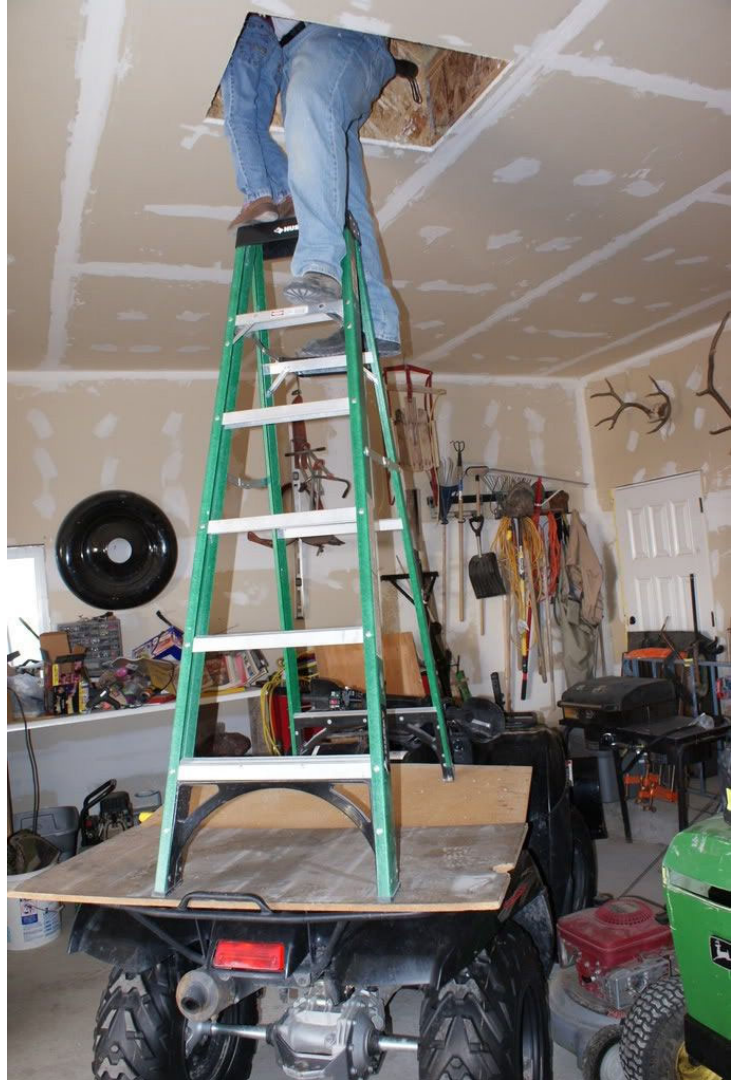








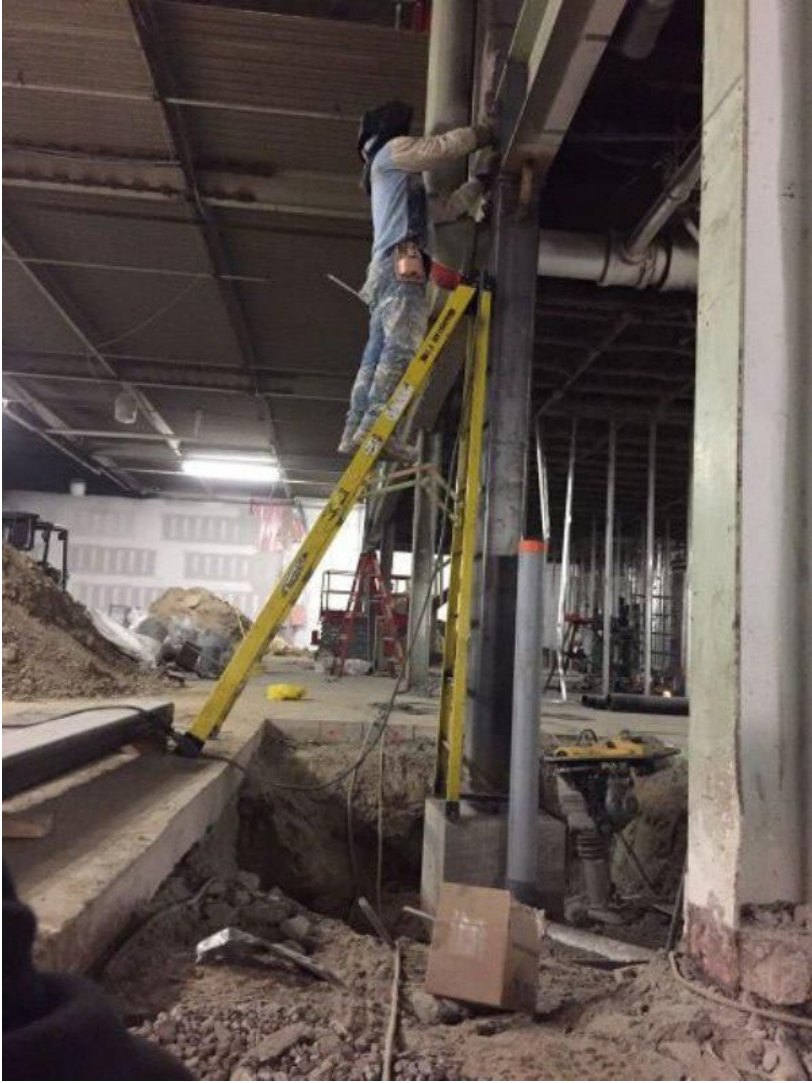




**AND THIS IS WHY WOMEN
LIVE LONGER THAN MEN**



more awesome pictures at THEMETHAPICTURE.COM GUGGLE.COM



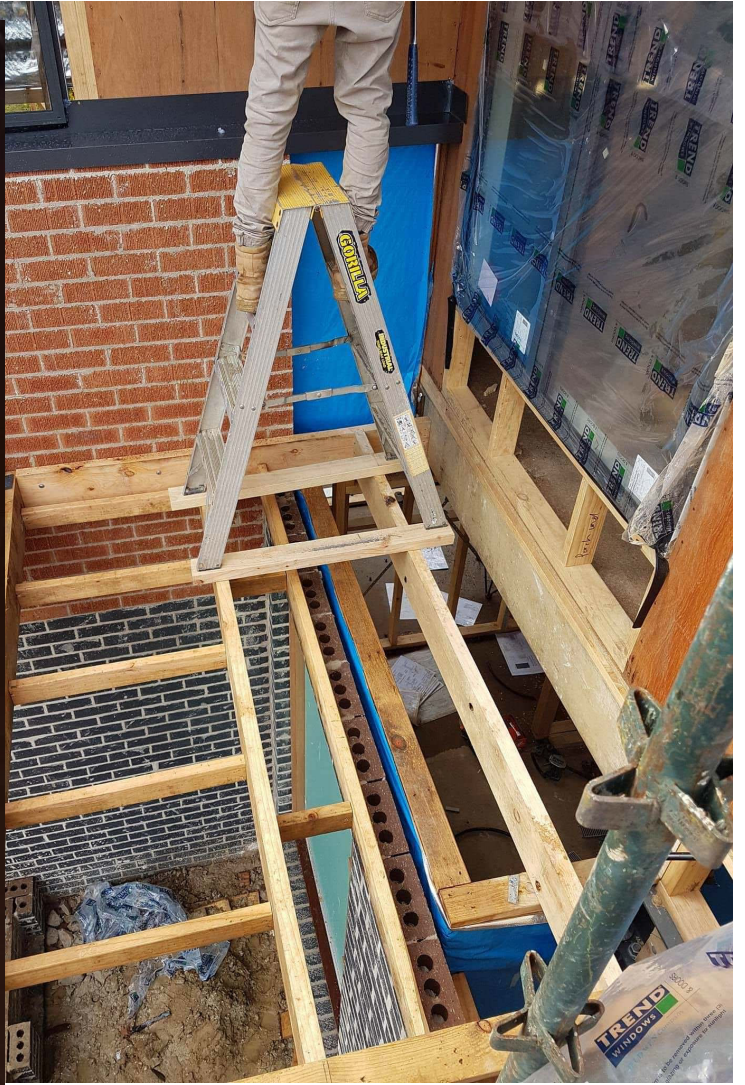












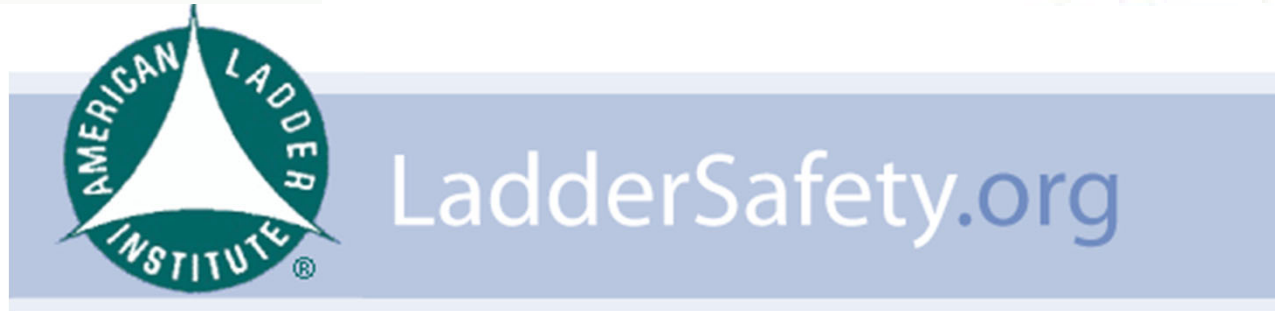


Ladder **SAFETY** & Innovation



**Little
Giant[®]**
Ladder Systems

CLIMB ON[™]





LADDER SAFETY TRAINING

Wing Enterprises

Welcome: David Francis

Modules Completed: #

Average Score: #

Manager's Tools:

[View Training](#)[Add Training User](#)[View All Training User Data](#)[Download User Data](#)

Add Training User

New User's First Name:

New User's Last Name:

New User's Email Address:

Confirm User's Email:

New User's Position:

[Add New Training User](#)

NOTE TO MANAGER:

Each new user added will receive a registration email with their password.

The user's training data and scores will then be available to you by pressing the "View All Training User Data" button under the Manager's Tools.

To download your training user's data, press the "Download User Data" button found in the Manager's Tools.



NATIONAL
LADDER SAFETY
MONTH



www.laddersafetymonth.com







How much \$ to change a light bulb?




The Hidden cost of Accidents and Injuries


Direct Costs		
<p>\$38,000 – US Average</p> <p>Insured and budgeted for:</p> <ul style="list-style-type: none">• Medical• Rehab expenses• Workers comp• Hospital <p>WCF reported \$62 Billion in non-fatal claims last year.</p>		



The Hidden cost of Accidents and Injuries

Direct Costs		Indirect Costs	3-10 X	
<p>\$38,000 – US Average</p>		<p>Direct Costs X 3 \$114,000</p>		
<p>Insured and budgeted for:</p> <ul style="list-style-type: none"> • Medical • Rehab expenses • Workers comp • Hospital 		<p>Uninsured and paid with Profit \$:</p> <ul style="list-style-type: none"> • Production loss • Replacement training • Legal issues • Investigation • Loss of morale 		
<p>WCF reported \$62 Billion in non-fatal claims last year.</p>		<p>OSHA estimates a total cost to business at \$198 Billion.</p>		

The Hidden cost of Accidents and Injuries

Direct Costs 	Indirect Costs 3-10 X	Revenue Required \$
<p>\$38,000 – US Average</p> <p>Insured and budgeted for:</p> <ul style="list-style-type: none"> • Medical • Rehab expenses • Workers comp • Hospital <p>WCF reported \$62 Billion in non-fatal claims last year.</p>	<p>Direct Costs X 3 \$114,000</p> <p>Uninsured and paid with Profit \$:</p> <ul style="list-style-type: none"> • Production loss • Replacement training • Legal issues • Investigation • Loss of morale <p>OSHA estimates a total cost to business at \$198 Billion.</p>	<p>Operating at a 10% Profit Margin you would need \$1,140,000 of work to cover indirect costs</p> <p>OSHA’s “Safety Pays” Program calculates total costs of accidents and the work needed to cover expenses. www.osha.gov/dcsp/safetypays</p> <p>Ladder related accident costs are 2-3 times higher than the average.</p>

**#1 – Choose
The Right
Ladder for
the Job.**





**Use
A
Ladder**

**AND THIS IS WHY WOMEN
LIVE LONGER THAN MEN**



more awesome pictures at THEMETHANATURE.COM
GOOGLE LENS

Material & Rating



Wood



Aluminum



Fiberglass

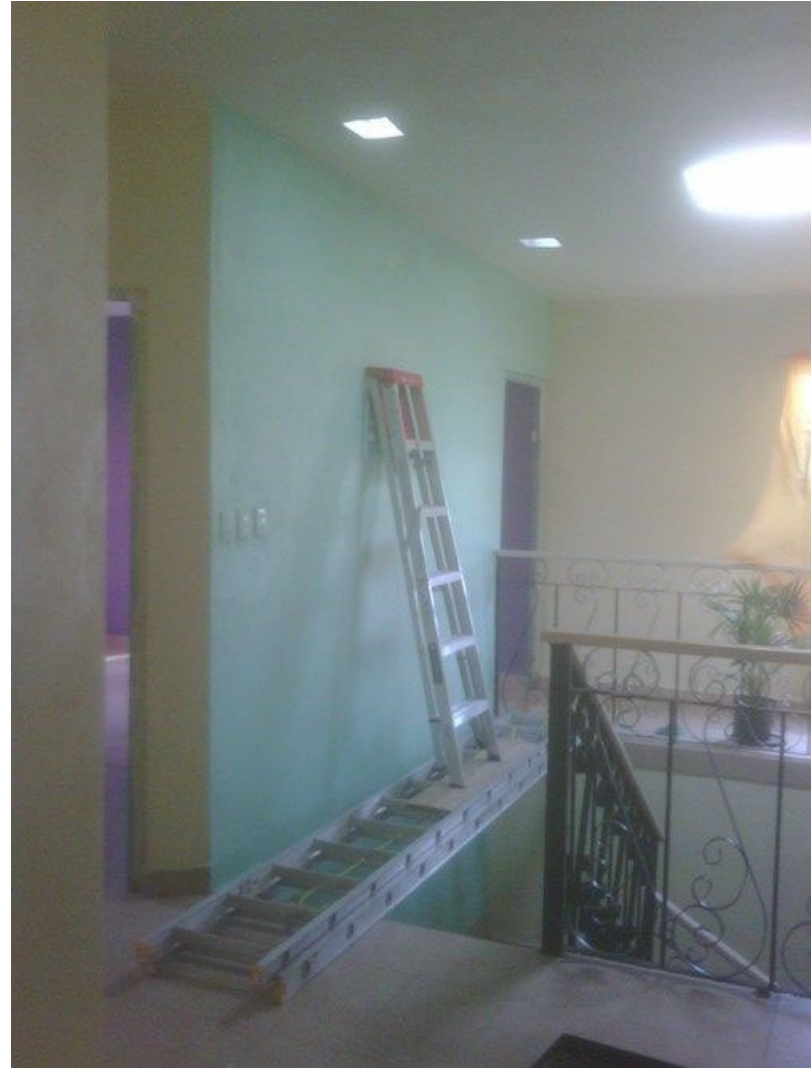
★
200 lbs. Light Duty
Household
use
Type III

★★
225 lbs. Medium Duty
Painter &
Handyman
Type II

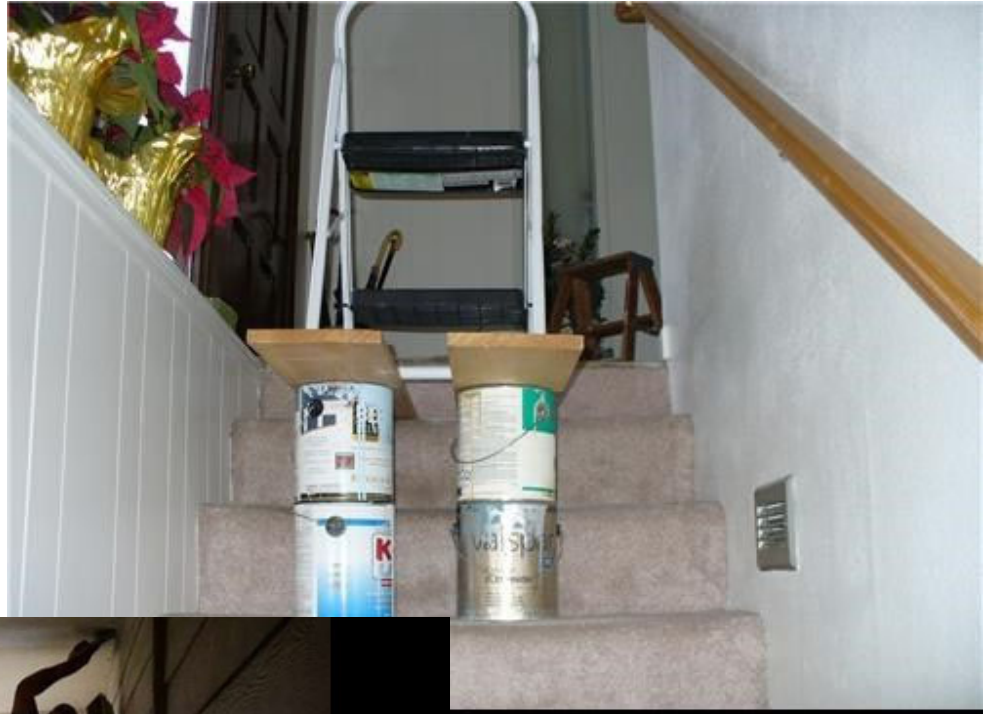
★★★
250 lbs. Heavy
Duty
Industrial
Type I

★★★★
300 lbs. Extra Heavy
Duty
Industrial
Type IA

★★★★★
375 lbs. Special Duty
Rugged
Professional
Type IAA

















INSPECT IT HOW OFTEN?






Inspection 



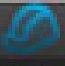


Rungs & Step Connections



Look for:

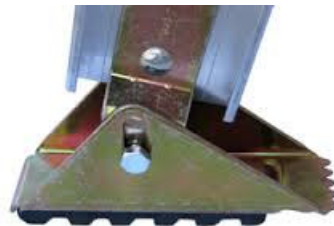
- Bends
- Breaks
- Loose rungs
- Missing rungs

Home  Measuring Tool  Ladder Safety 

The image is a screenshot of a mobile application interface. At the top, there is a header with the word "Inspection" and a lightbulb icon. Below the header, there is a 3D rendering of a ladder with several orange and green circular markers indicating inspection points. To the right of the ladder, there is a section titled "Rungs & Step Connections" with a small inset image showing a close-up of the ladder's rungs and connections. Below this section, there is a list of items to look for: "Bends", "Breaks", "Loose rungs", and "Missing rungs". At the bottom of the screen, there is a navigation bar with three icons and their corresponding labels: "Home", "Measuring Tool", and "Ladder Safety".

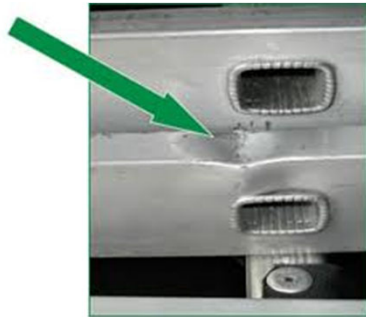
From the Ground Up

Aluminum Swivel Type Ladder Shoes



Feet on your ladder are like the tires on your car.

Side Rails



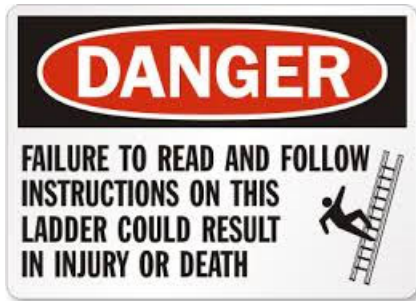
Fiber Bloom



Steps & Rungs



Labels



Nuts & Bolts

All bolts and rivets are in place and securely tighten

Any auxiliary equipment is securely attached, not excessively worn and functions properly.

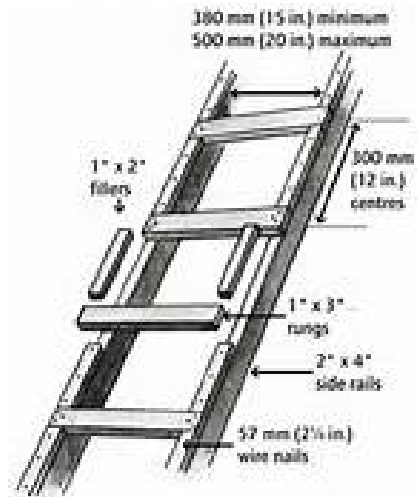
Hardware and fittings are securely attached and working properly

Ropes aren't frayed or badly worn

Moveable parts operate freely without binding or excessive play.

In the event a ladder is discarded, it must be destroyed in such a manner as to render it useless. Another person must not be afforded the opportunity to use a ladder that has been deemed unsafe.

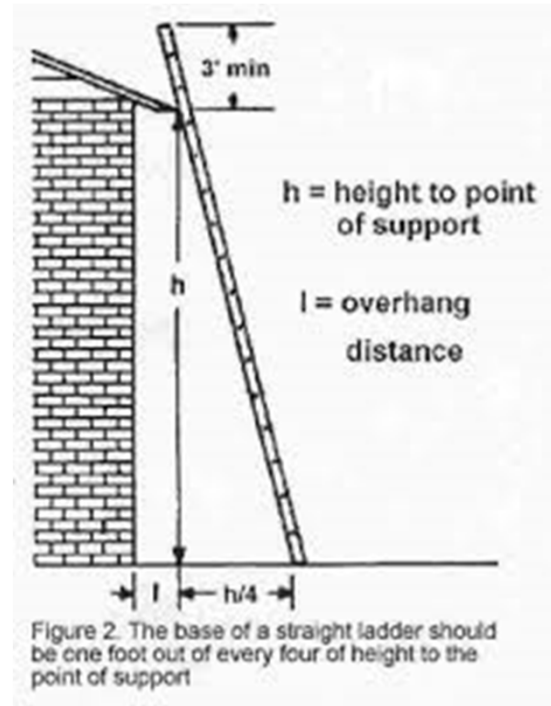
Job Made Wood







4 to 1



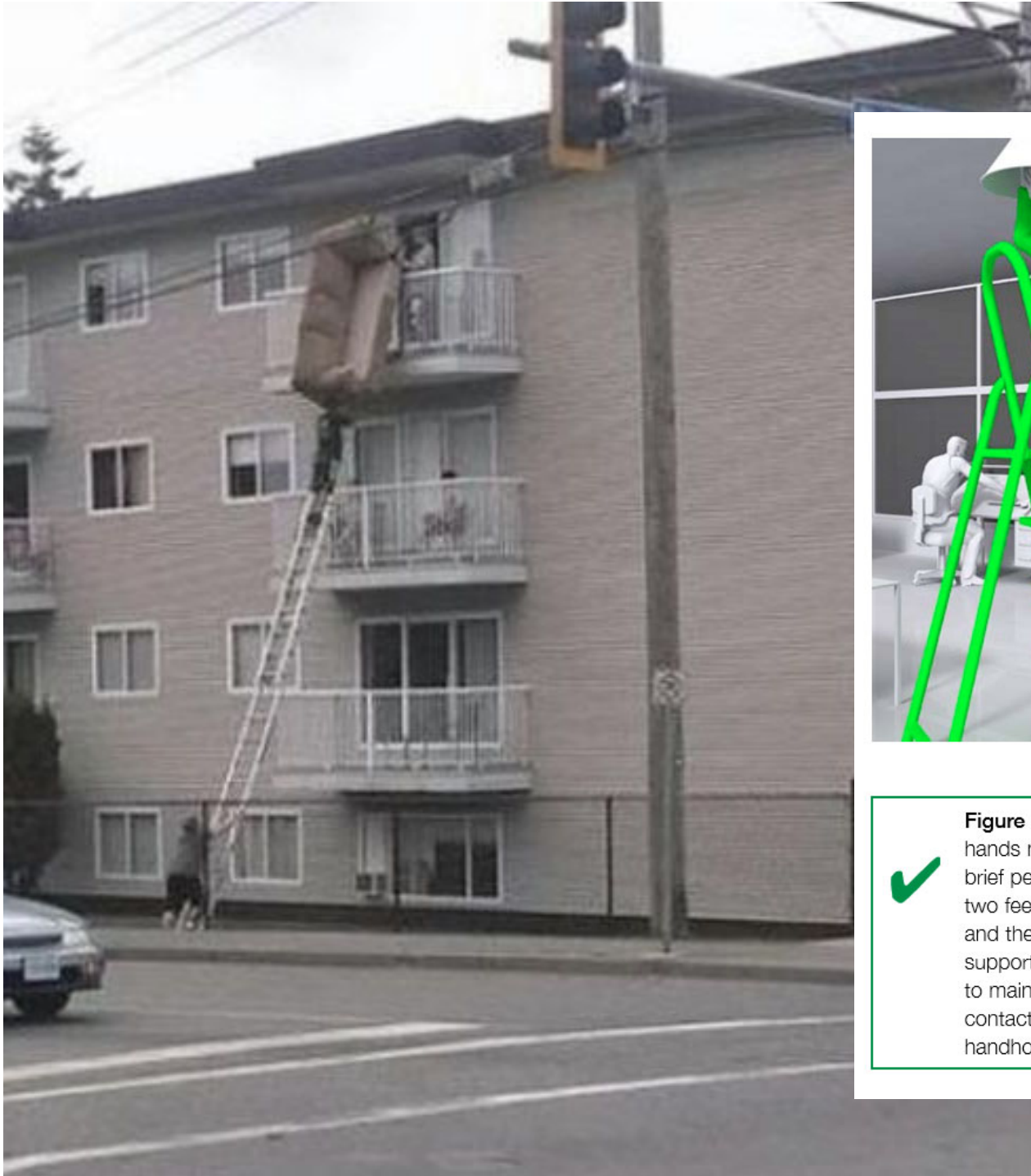


Figure 5 Example where two hands need to be free for a brief period for light work. Keep two feet on the same step and the body (knees or chest) supported by the stepladder to maintain three points of contact. Make sure a safe handhold is available





35 - People Permanently Disabled Today

12,000 - Families





GRANDPA'S LADDER





Hierarchy of Control



Car/Ladder design comparison

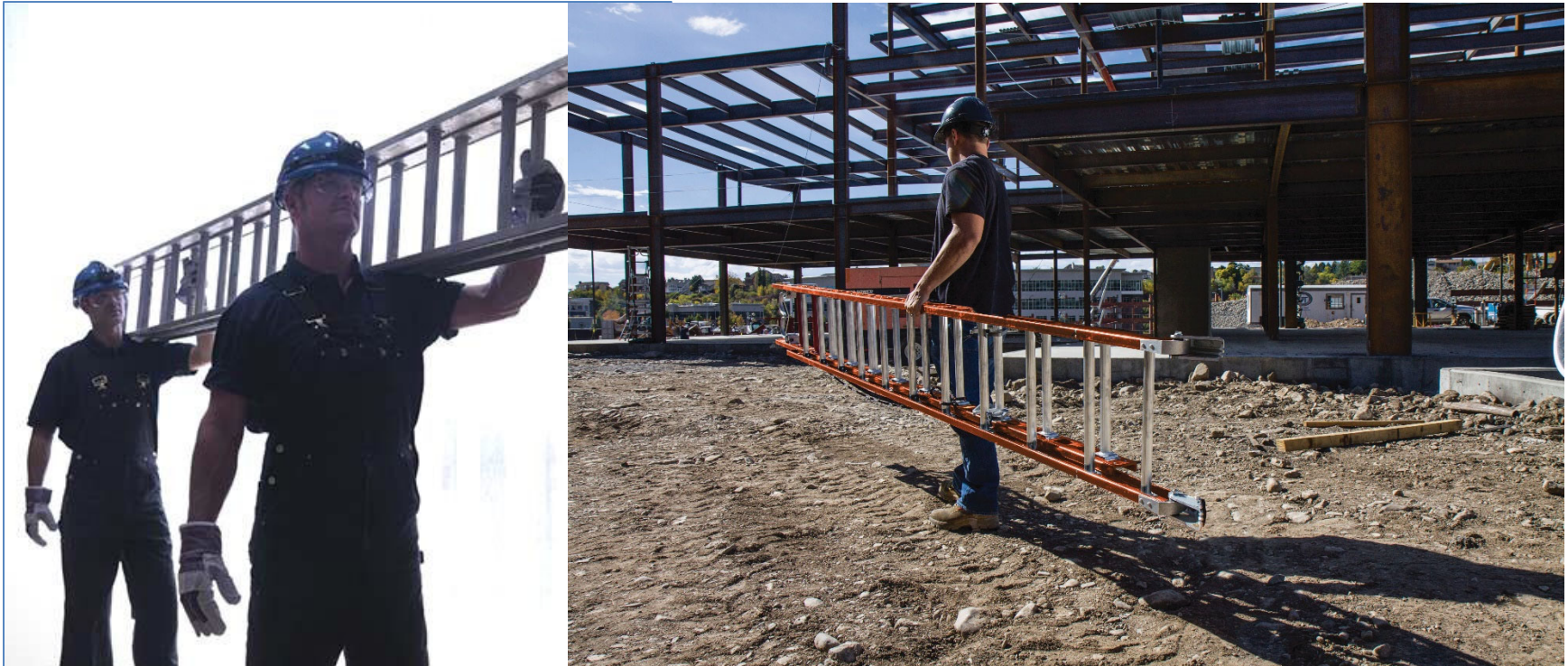


vs.





Problem #1





Problem #2



Field trial with ladder
missing top step



Problem #3

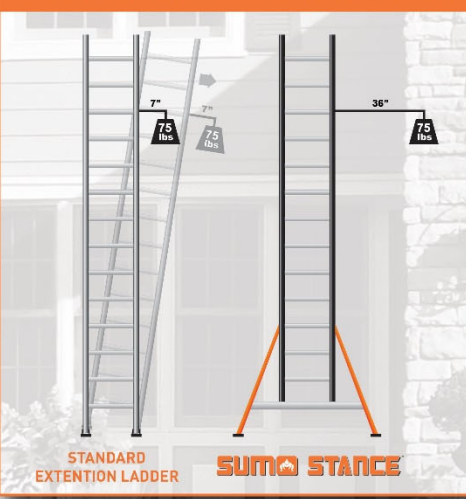




OFF AN INCH = OFF MORE THAN A FOOT

LADDER HEIGHT FEET	UNEVEN GROUND INCHES	SLIDE AT THE TOP INCHES
28'	1/4"	6"
28'	1/2"	10"
28'	1"	19"

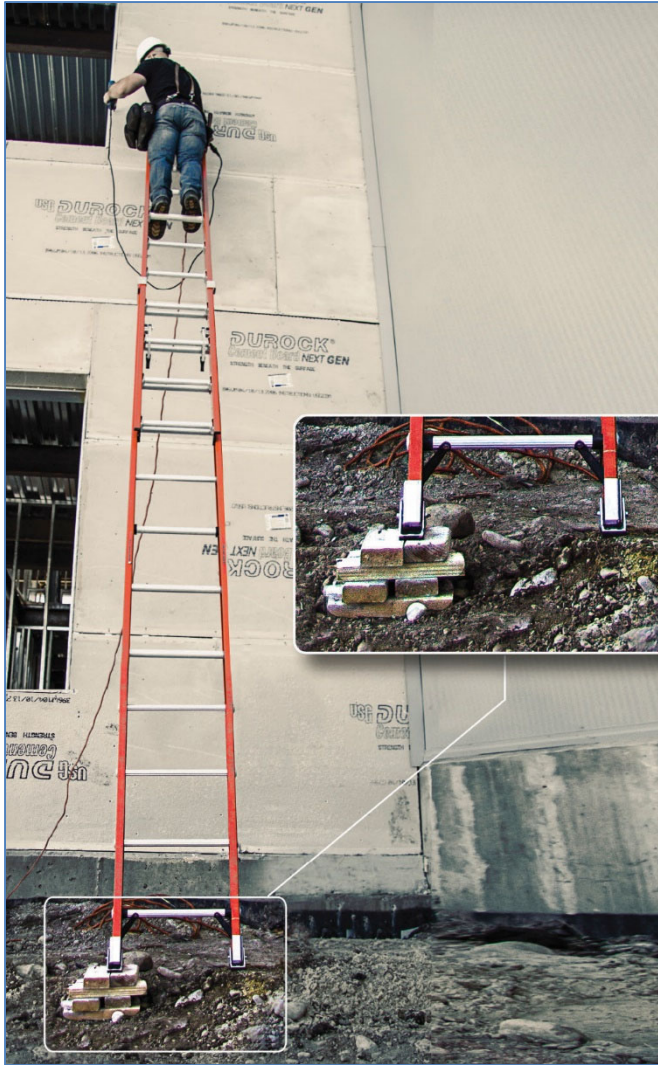
INCREASES SIDE-TIP STABILITY BY +600%

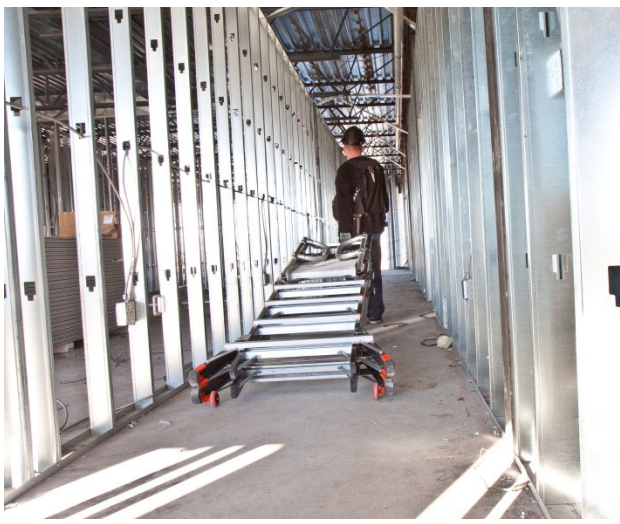












**PREVENTING INJURIES,
SAVING LIVES™**

