



LINCOLN HOMELESS

Point in Time and System Performance Measures

POINT IN TIME COUNT

COC SYSTEM PERFORMANCE MEASURES

JEFF M. CHAMBERS

UNL- CENTER ON CHILDREN, FAMILIES AND THE LAW

JULY 22ND, 2016



HOMELESS POINT IN TIME (PIT) COUNT AND HOUSING INVENTORY COUNT (HIC)

- HUD Homeless Definitions
- Sheltered (ES, TH)
- Unsheltered Count (Street Count)
- Housing Inventory Count(HIC)
- Required to be conducted last week in January
- Sunset to Sunrise on the night of the count



LINCOLN 2016 POINT IN TIME COUNT

- Night of January 28th
- Sheltered Count conducted through HMIS and paper forms for non-HMIS agencies
- Unsheltered count – street outreach programs and community volunteers canvass known locations for unsheltered, and walk downtown and campus areas.



LINCOLN 2016 HOMELESS POINT IN TIME COUNT

- Six-hundred and ninety-four (694) homeless persons counted on night of count in 512 households.

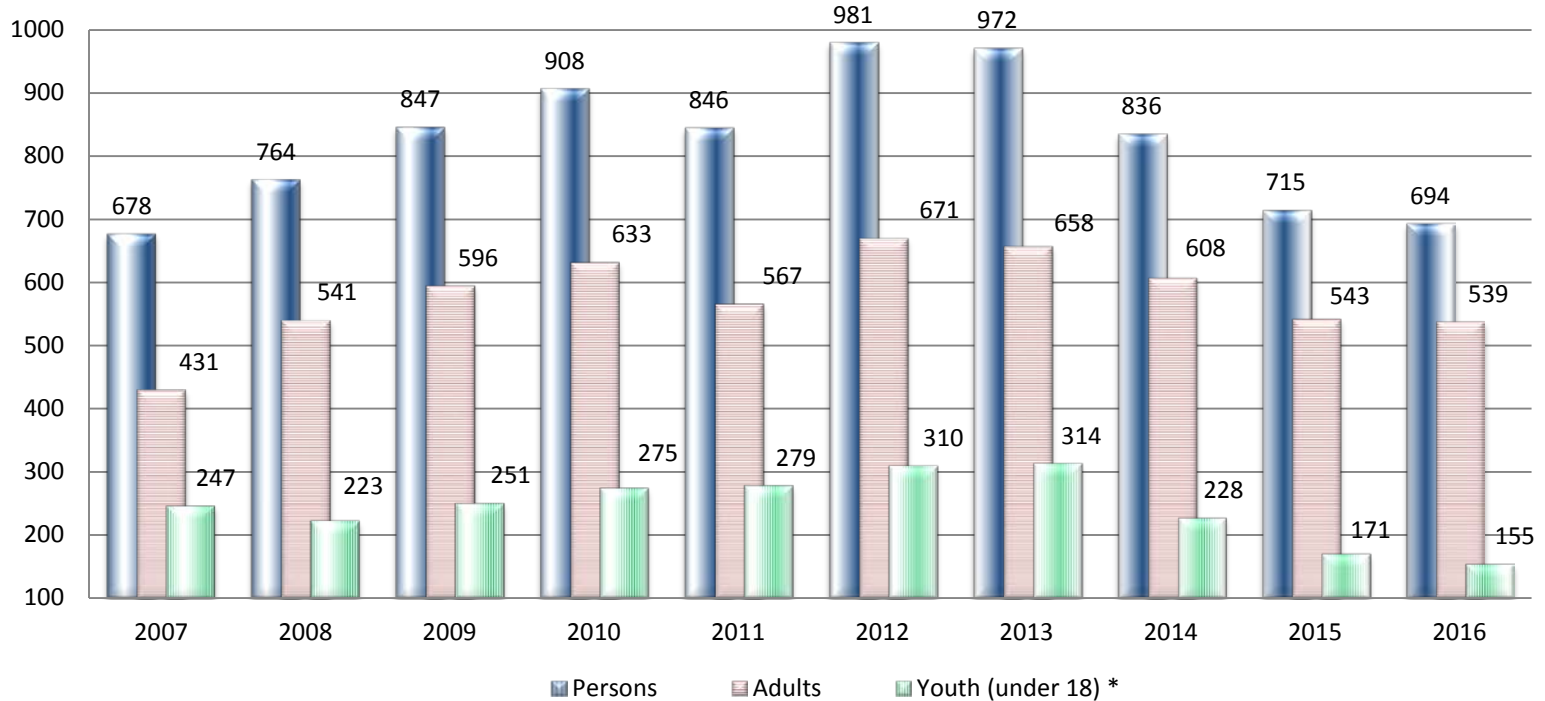
Lincoln Point in Time Count – January 28 nd 2016					Not counted homeless for the HUD Point in Time Count	
Emergency Shelter		Transitional Housing		Unsheltered	Permanent Housing (PSH & OPH)	Rapid Rehousing RRH
Households	Persons	Households	Persons	Persons		
233	316	247	346	32	265	76



Lincoln Homeless Point in Time Count

Homeless Persons 2007 - 2016

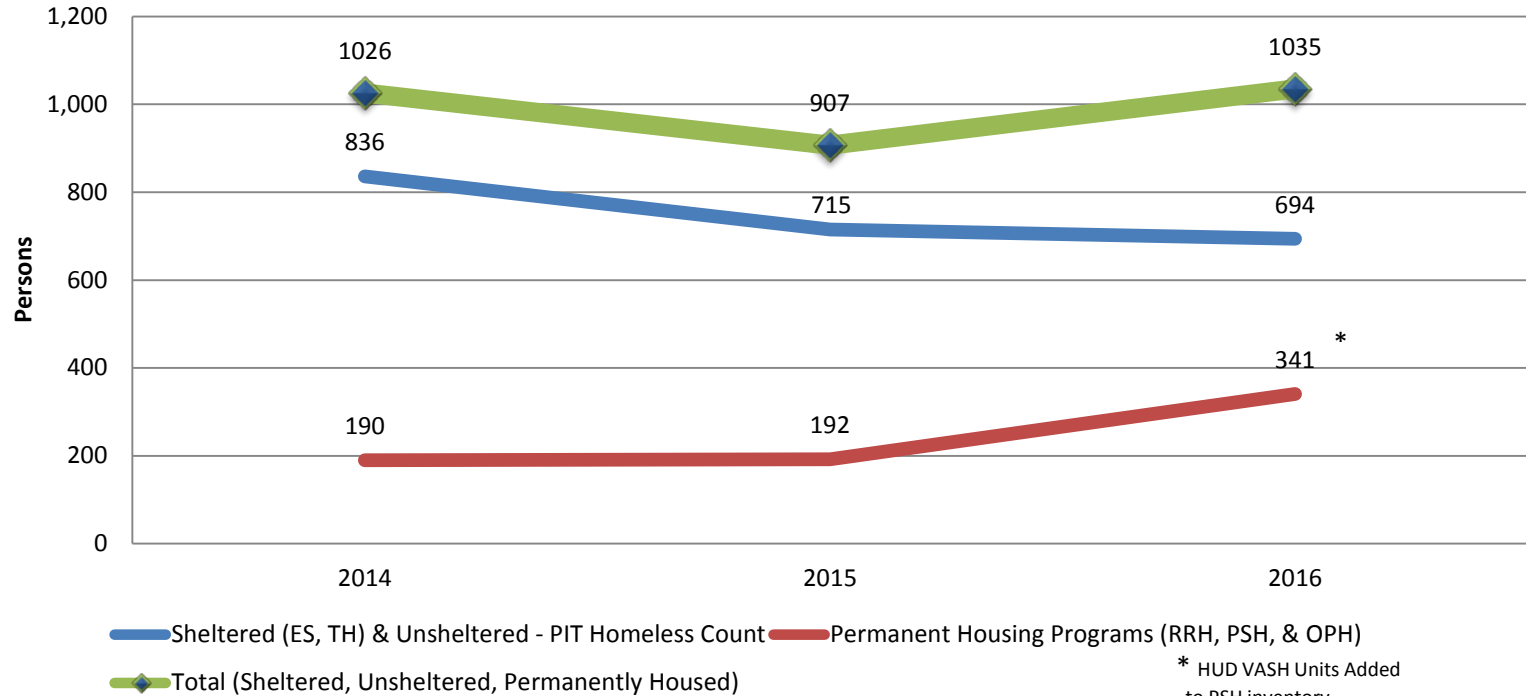
Current PIT conducted
January 28nd, 2016



*Beginning in 2015 Youth count include only those under 18 years



Lincoln Homeless & Formerly Homeless Persons in Permanent Housing Programs January 28th 2016

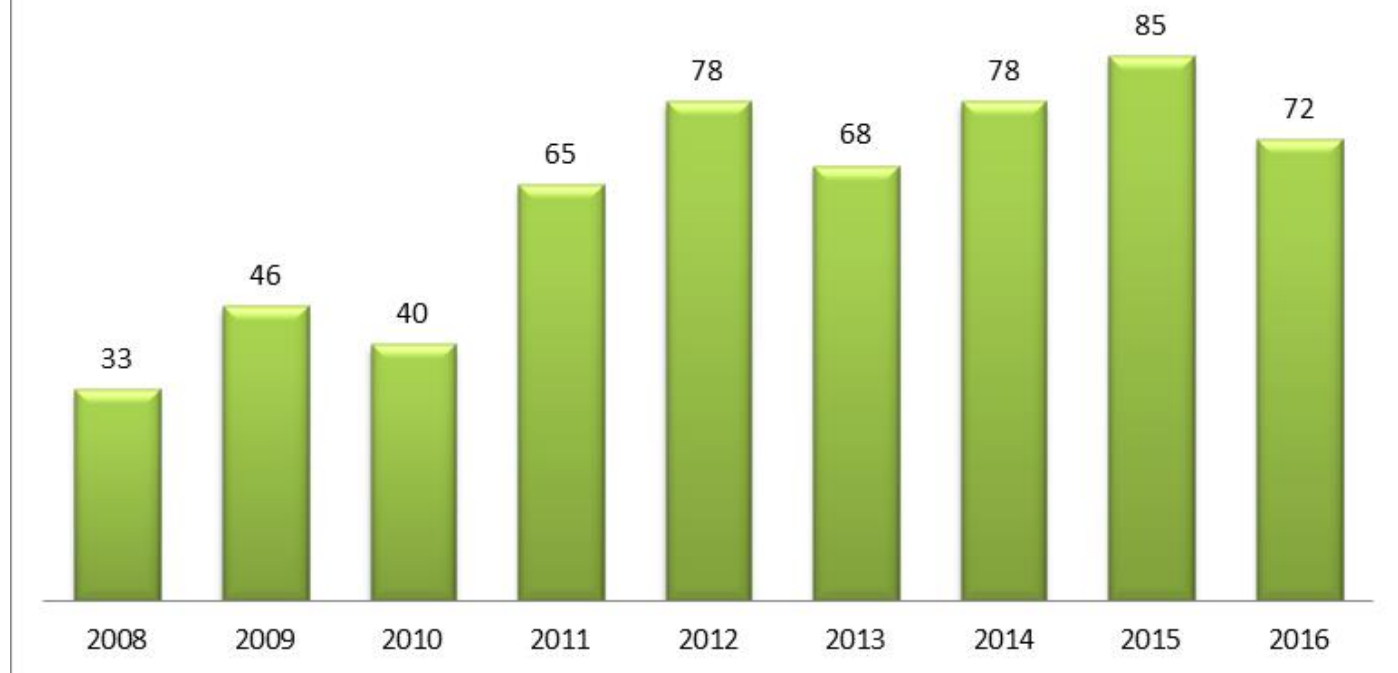


* HUD VASH Units Added to PSH inventory

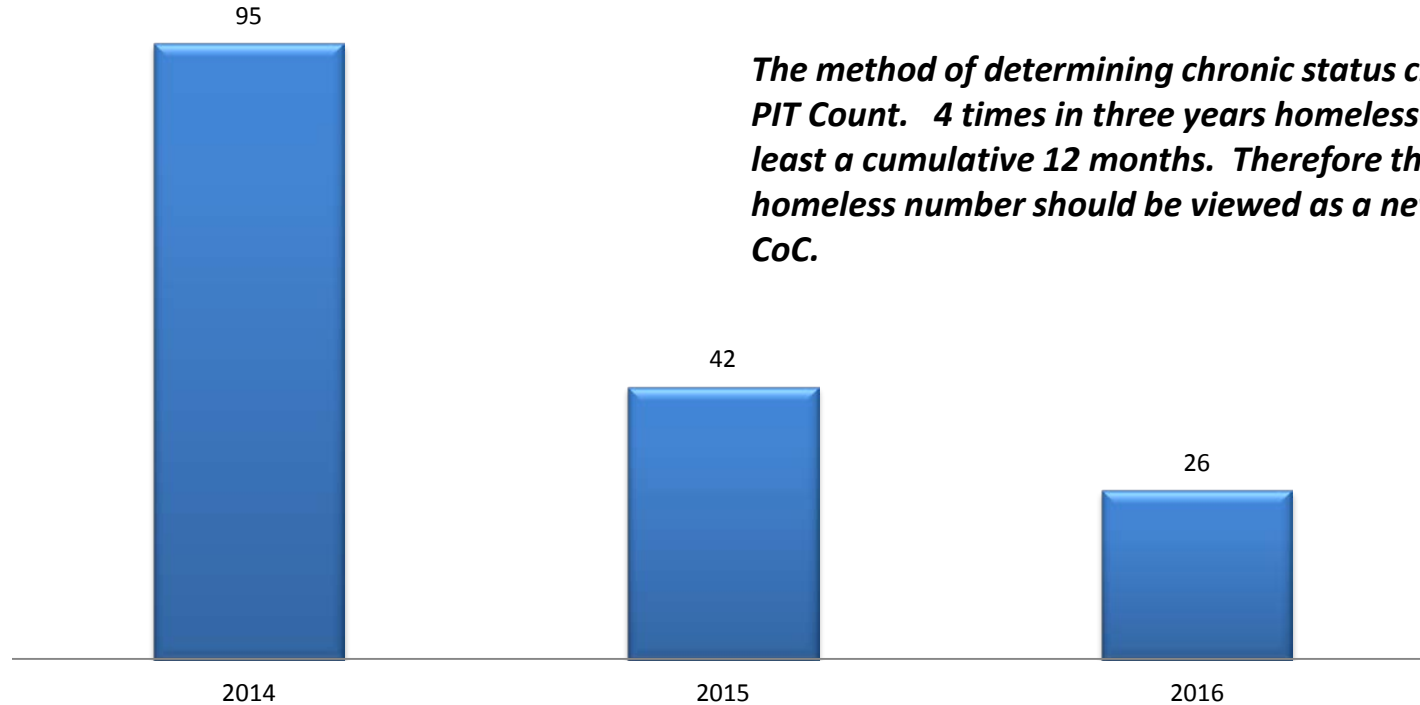




Homeless U.S. Military Veterans 2008 - 2012 Lincoln Point in Time Count



**Chronic Homeless
Lincoln PIT Count 2014 - 2016***



The method of determining chronic status changed for the 2016 PIT Count. 4 times in three years homeless must have been for at least a cumulative 12 months. Therefore the 2016 chronic homeless number should be viewed as a new baseline for the CoC.





LINCOLN 2016 HOUSING INVENTORY COUNT

269 Emergency Shelter Beds (85% capacity 2016 PIT)

107 beds for HH with children

154 beds for HH without children

409 Transitional Housing Beds (84% capacity 2016 PIT)

194 beds for HH with children

215 beds fro HH without children

227 Permanent Supportive Housing Beds (98% capacity 2016 PIT)

41 beds for HH with children

186 beds fro HH without children)

76 Rapid Rehousing Beds **

43 beds for HH with children

33 beds for HH without children



HOMELESS SYSTEM PERFORMANCE MEASURES

- Seven Measures Identified by HUD that COCs will be evaluated on in serving homeless and ending homelessness in the community
 - Length of time Homeless
 - Exits to Permanent Housing and Return to Homelessness
 - Number of Homeless
 - Employment and Income Growth for Homeless
 - Persons becoming homeless for first time
 - Placement from SO and in Permanent Housing
 - Homeless Prevention and Housing Placement of Category 3



MEASURE 1: LENGTH OF TIME HOMELESS

	Previous FY Universe	Current FY Universe	Previous FY Average LOT Homeless	Current FY Average LOT Homeless	Difference	Previous FY Median LOT Homeless	Current FY Median LOT Homeless	Difference
Persons in ES and SH	1833	1830	54	51	-3	14	22	-2
Persons in ES, SH, and TH	2483	2518	121	123	2	50	50	0



MEASURE 2: PERSONS WHO EXIT HOMELESS AND RETURN TO HOMELESSNESS

	Total Number of Persons who Exited to a Permanent Housing Destination (2 Years Prior)	Number Returning to Homelessness in Less than 6 Months (0 - 180 days)	Percentage of Returns in Less than 6 Months (0 - 180 days)	Number Returning to Homelessness from 6 to 12 Months (181 - 365 days)	Percentage of Returns from 6 to 12 Months (181 - 365 days)	Number Returning to Homelessness from 13 to 24 Months (366 - 730 days)	Percentage of Returns from 13 to 24 Months (366 - 730 days)	Number of Returns in 2 Years	Percentage of Returns in 2 Years
Exit was from SO	12	1	8.33%	1	8.33%	0	0%	2	16.7%
Exit was from ES	249	40	16%	10	4.0%	13	5.2%	63	25.3%
Exit was from TH	262	22	8.4%	13	5.0%	23	8.8%	58	22.1%
Exit was from PH	32	2	5.6%	0	0.0%	3	8.3%	5	13.9%
TOTAL Returns to Homelessness	547	64	11.7%	23	4.2%	39	7.1%	126	23.0%



MEASURE 3: NUMBER OF HOMELESS PERSONS

Metric 3.1: This measures the change in PIT counts of sheltered and unsheltered homeless person as reported on the PIT.

	Previous FY PIT Count	Current FY PIT Count	Difference
Universe: Total PIT Count of sheltered and unsheltered persons	836	714	-122
Emergency Shelter Total	340	264	-76
Safe Haven Total	N/A	N/A	N/A
Transitional Housing Total	450	395	-55
Total Sheltered Count	790	659	-131
Unsheltered Count	46	55	9

Metric 3.2: This measures the change in annual counts of sheltered homeless persons in HMIS.

	Previous FY	Current FY	Difference
Universe: Unduplicated Total sheltered homeless persons	2556	2565	9
Emergency Shelter Total	1868	1839	-29
Safe Haven Total	0	0	0
Transitional Housing Total	872	930	58



MEASURE 4: EMPLOYMENT AND INCOME GROWTH

Metric 4.1 Change in earned income for adult system stayers

	Previous FY	Current FY	Difference
Universe: Number of adults (system stayers)	101	71	-30
Number of adults with increased earned income	1	10	9
Percentage of adults who increased earned income	0.99%	14.08%	

Metric 4.2 Change in non-employment cash income for adult system stayers

	Previous FY	Current FY	Difference
Universe: Number of adults (system stayers)	101	71	-30
Number of adults with increased non-employment cash income	3	13	10
Percentage of adults who increased non-employment cash income	2.97%	18.31%	

Metric 4.3 Change in total income for adult system stayers

	Previous FY	Current FY	Difference
Universe: Number of adults (system stayers)	101	71	-30
Number of adults with increased total income	4	21	17
Percentage of adults who increased total income	3.93%	29.58%	



MEASURE 4: EMPLOYMENT AND INCOME GROWTH

Metric 4.4 Change in earned income for adult system leavers

	Previous FY	Current FY	Difference
Universe: Number of adults (system stayers)	173	176	3
Number of adults with increased earned income	33	29	-4
Percentage of adults who increased earned income	19.1%	16.5%	

Metric 4.5 Change in non-employment cash income for adult system leavers

	Previous FY	Current FY	Difference
Universe: Number of adults (system stayers)	173	176	-30
Number of adults with increased non-employment cash income	40	39	-1
Percentage of adults who increased non-employment cash income	23.1%	22.2%	

Metric 4.6 Change in total income for adult system leavers

	Previous FY	Current FY	Difference
Universe: Number of adults (system stayers)	173	176	3
Number of adults with increased total income	67	62	-5
Percentage of adults who increased total income	38.7%	35.2%	



MEASURE 5: NUMBER OF PERSONS WHO BECOME HOMELESS FOR THE FIRST TIME

Metric 5.1: This measures the change in active persons in ES, SH, and TH project with no prior enrollments in HMIS

	Previous FY PIT Count	Current FY PIT Count	Difference
Universe: Persons with entries into ES, SH, or TH during reporting period	2200	2163	-37
Of persons above, those who were in ES, SH, TH or any PH within 24 months prior to their entry during reporting year.	646	641	-5
Of persons above, those who did not have entries in ES, TH, or PH in the previous 24 months.	1554	1522	-32

Metric 5.2: This measures the change the number of persons entering ES, SH, TH and PH projects with no prior enrollment in HMIS.

	Previous FY PIT Count	Current FY PIT Count	Difference
Universe: Persons with entries into ES, SH, TH, or <u>PH</u> during reporting period	2264	2246	-18
Of persons above, those who were in ES, SH, TH or any PH within 24 months prior to their entry during reporting year.	672	687	15
Of persons above, those who did not have entries in ES, TH, or PH in the previous 24 months.	1592	1559	-33



MEASURE 6:HOUSING PLACEMENT OF PERSONS DEFINED BY CATEGORY 3 OF HUD'S HOMELES DEFINITON IN COC PROGRAM-FUNDED PROJECTS.

Not applicable currently.

No CoC has been is designated to serve this category 3 homeless population.

High performing communities will be designated.



MEASURE 7: SUCCESSFUL PLACEMENT FROM STREET OUTREACH & SUCCESSFUL PLACEMENT IN/OR RETENTION OF PERMANENT HOUSING

Metric 7a.1 Change in exits from street outreach to acceptable destinations

	Previous FY	Current FY	Difference
Universe: Persons who exit street outreach	283	306	23
Of persons above, those who exited to temporary & some institutional destinations	21	93	72
Of persons above, those who exited to permanent housing destinations	12	66	54
% Successful Exits	11.7%	51.9%	

Metric 7b.1 Change in exits to permanent housing destinations.

	Previous FY	Current FY	Difference
Universe: Persons in ES, SH, TH, and PH-RRH who exited	1587	1940	353
Of the persons above, those who exited to permanent housing destinations	492	474	-18
% Successful Exits	31.0%	24.4%	

Metric 7b.2 Change in exits to or retention of permanent housing.

	Previous FY	Current FY	Difference
Universe: Persons in all PH projects except PH-RRH	156	183	27
Of persons above, those who remained in applicable PH projects and those who exited to permanent housing destinations	142	169	27
% Successful exits/retention	91.0%	92.3%	



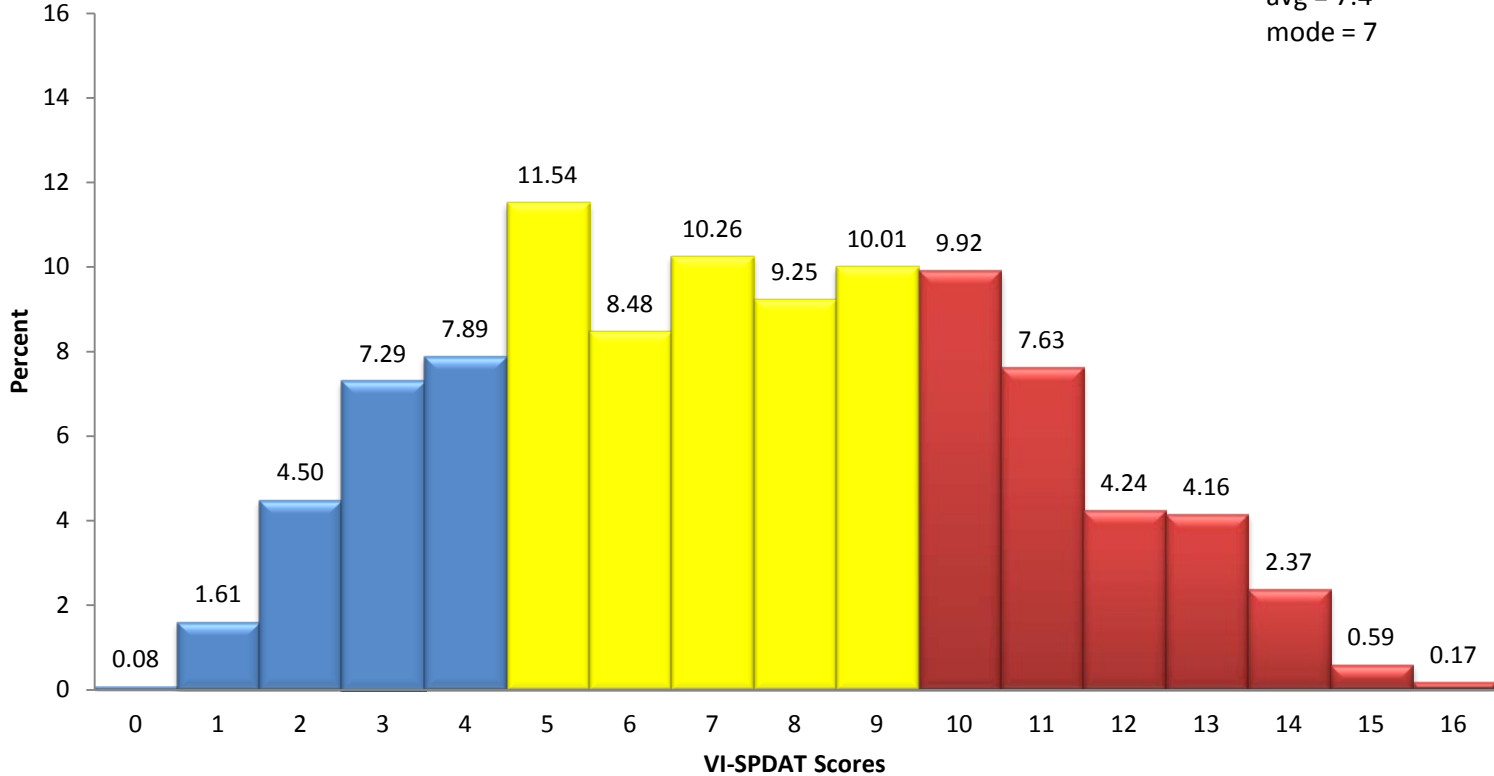
VI-SPDAT RESULTS IN BOS AND LINCOLN

- 1,953 homeless persons have been assessed using the VI-SPDAT since October 2015 (unduplicated)
 - ✓ 774 in Nebraska BOS CoC
 - ✓ 1,179 in Lincoln CoC

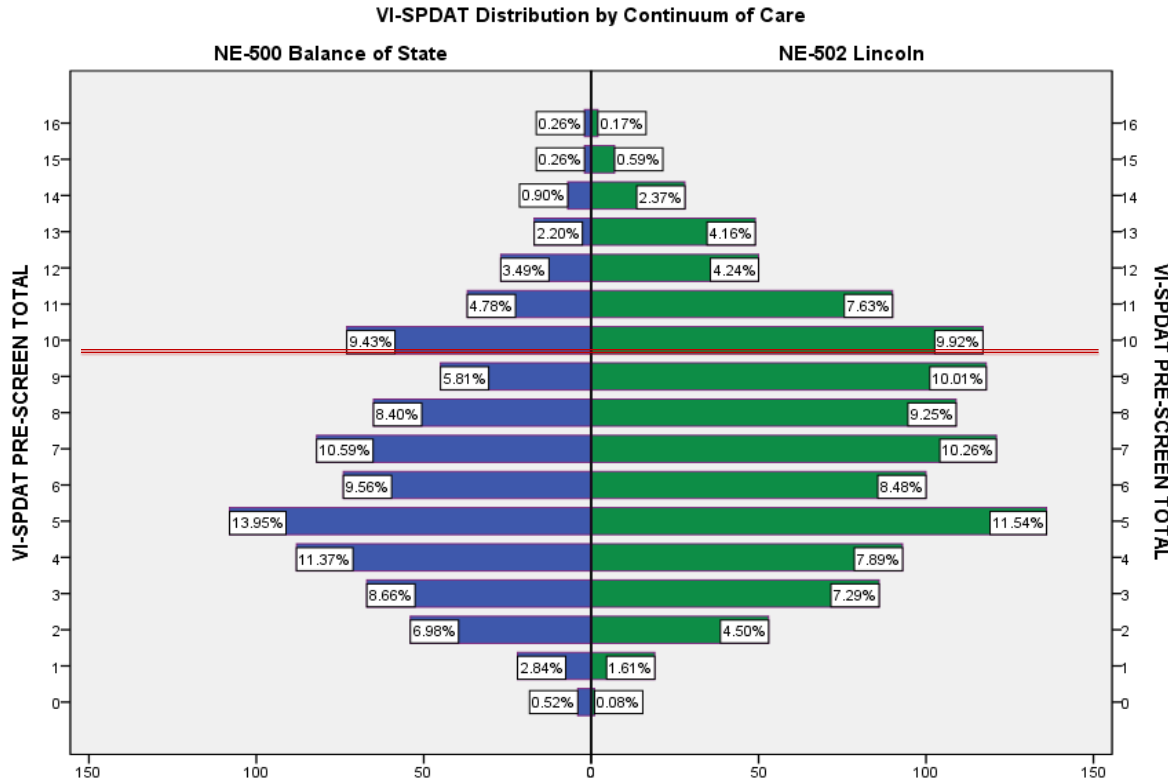


Lincoln CoC VI-SPDAT

n = 1,179
avg = 7.4
mode = 7



RURAL – URBAN DIFFERENCES IN SINGLES VI-SPDAT ASSESSMENTS



BOS Avg. = 6.47

Lincoln Avg. = 7.41

Lincoln – 29% 10+

BOS – 21% 10+

Lincoln single homeless
are on average 2 years
older (45 to 43 years)

47% of BOS MVRT 10+ are
female

42% of Lincoln MVRT 10+
are female



Nebraska BOS & Lincoln MVRT (10+) Exit Destinations

n = 124

