



THE DURHAM SCHOOL OF ARCHITECTURAL ENGINEERING AND CONSTRUCTION

ANNUAL METRICS

Academic Years
2010-2017[‡]



[‡]AY 2018 data included where available.



THE DURHAM SCHOOL
OF ARCHITECTURAL ENGINEERING AND CONSTRUCTION



The Durham School Mission

The Charles W. Durham School of Architectural Engineering and Construction was formed by action of the Board of Regents on December 13, 2003. In the program statement to the Regents, it was indicated that the “objective in consolidating these three closely allied programs is a strong, dynamic unit that will allow the College of Engineering to become a national leader in this field.” It was also stated that the new school will establish national standards of excellence by incorporating technologically advanced education and research programs in collaboration with private sector industry leaders.

The mission of The Charles W. Durham School of Architectural Engineering and Construction is to provide the highest quality education for design and building professionals; and to promote and advance industrial innovation and standards through research and technology utilization and transfer.



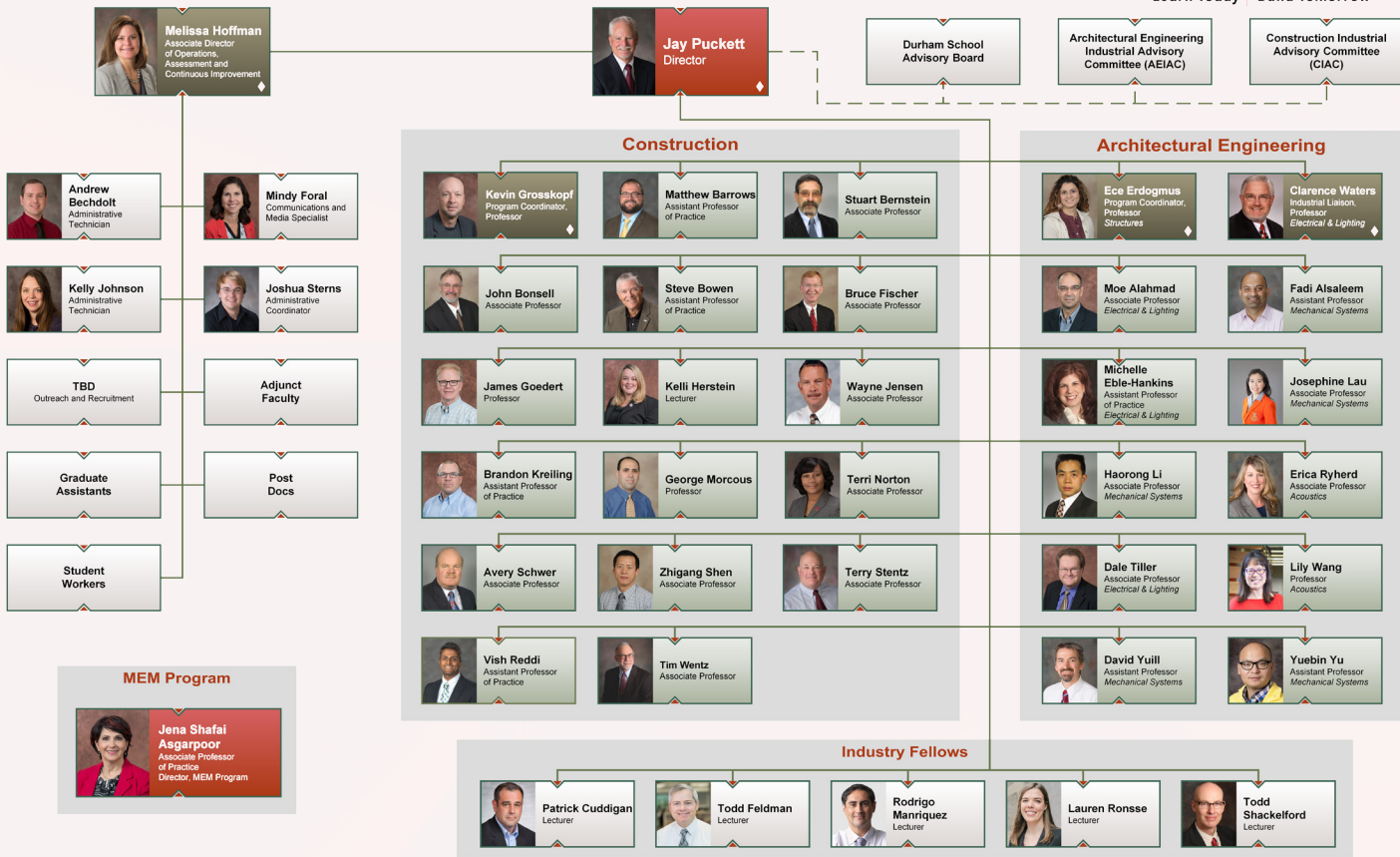


Organizational Chart

2017-2018 Organizational Chart

Executive Council Member

N THE DURHAM SCHOOL OF ARCHITECTURAL ENGINEERING AND CONSTRUCTION
Learn Today Build Tomorrow



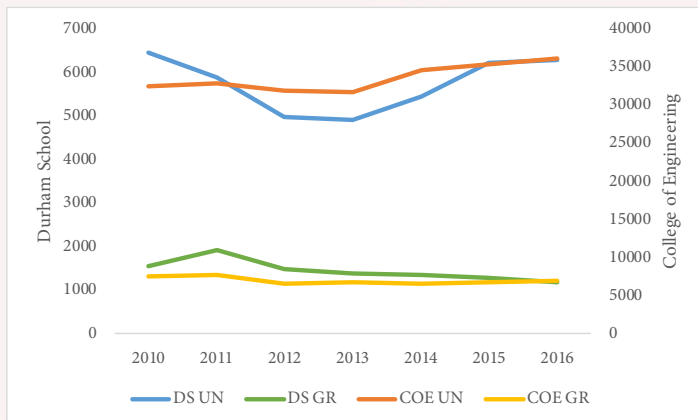


Degree's Offered

	Bachelor of Science (B.S.)	Master of Architectural Engineering (M.A.E.)	Master of Science (M.S.)	Doctoral (Ph.D.)
Architectural Engineering (Omaha Only)	X	X	X	X
Construction (Omaha & Lincoln)			X	X
Construction Engineering (Omaha & Lincoln)	X			
Construction Management (Omaha & Lincoln)	X			

Credit Hours Taught

	AY 2010-11	AY 2011-12	AY 2012-13	AY 2013-14	AY 2014-15	AY 2015-16	AY 2016-17
DSAEC							
Undergraduate Courses	6458	5870	4983	4902	5440	6229	6303
Graduate Courses	1548	1917	1478	1375	1355	1267	1187
College of Engineering							
Undergraduate Courses	32402	32781	31968	31696	34509	35369	36174
Graduate Courses	7603	7718	6591	6703	6493	6728	6870



Represents student's grade level with respect to total credit hours.

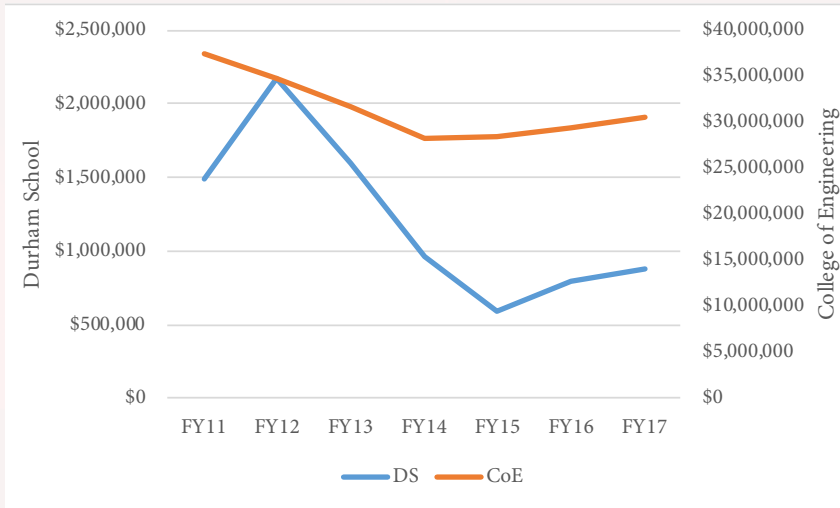
Source: Institutional Research and Planning





Research Expenditures by Program

	FY 2011	FY 2012	FY 2013	FY 2014	FY 2015	FY 2016	FY 2017
DSAEC	\$1,487,295	\$2,175,920	\$1,596,542	\$965,275	\$587,426	\$789,091	\$875,373
College of Engineering	\$37,475,378	\$34,766,541	\$31,666,680	\$28,257,499	\$28,391,721	\$29,397,052	\$30,543,731*



Data represents Fiscal Year (FY) July 1 - June 30.

*The College of Engineering's expenditures for FY2017 do not include some Biological Systems Engineering expenditures.

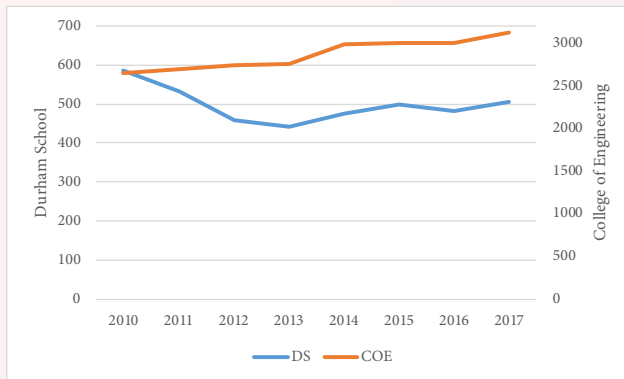
Source: UNL College of Engineering





Undergraduate Enrollment

	Fall 2010	Fall 2011	Fall 2012	Fall 2013	Fall 2014	Fall 2015	Fall 2016	Fall 2017
Architectural Engineering	221	204	172	169	167	168	160	172
Construction Management (Omaha)	107	103	94	85	89	99	91	81
Construction Management (Lincoln)	206	182	154	149	166	183	179	198
Construction Engineering (Omaha)	45	39	36	25	30	22	24	26
Construction Engineering (Lincoln)				12	22	26	29	28
Construction Engineering Technology*	2	1	0					
Pre-Architectural Engineering	4	2	1					
DSAEC	585	531	457	440	474	498	483	505
College of Engineering	2648	2692	2740	2759	2993	3008	3066	3117



**The Construction Engineering Technology program began its phase-out in Fall 2006 due to the transition to Construction Engineering and Construction Management on the Omaha Campus in 2005. Data represents total program enrollment taken from the 6th day of census.*

Source: Institutional Research and Planning





ACT Scores Incoming Freshman

	Fall 2010	Fall 2011	Fall 2012	Fall 2013	Fall 2014	Fall 2015	Fall 2016
Architectural Engineering	27.7	28.1	29.2	30.0	28.4	28.9	27.8
Construction Management	26.7	26.2	28.0	27.4	27.4	27.1	27.6
Construction Engineering	24.9	25.6	25.5	26.1	26.5	26.0	24.9
DSAEC	26.6	27.4	28.3	28.5	27.6	28.1	26.8
University of Nebraska - Lincoln	25.3	25.3	25.4	25.3	25.4	25.2	25.2

Source: Institutional Research and Planning and the College of Engineering





Undergraduate Scholarships Awarded by The Durham School

	Academic Year 2016-17		Academic Year 2017-18	
	Total Scholarships	Total \$ Awarded	Total Scholarships	Total \$ Awarded
Architectural Engineering	27	\$81,760	32	\$133,750
Construction (Omaha)	27	\$74,760	15	\$38,600
Construction (Lincoln)	45	\$86,735	44	\$91,300
Total	99	\$243,255	91	\$263,650

Source: Durham School scholarship records





Durham School Career Fair Statistics

	2010	2011	2012	2013	2014	2015	2016
Registered Employers	27	33	38	43	60	76	81
States Represented	7	7	10	10	11	18	15
Next-Day Interviews					120	200	230
Visitors	265	272	N/A	N/A	302	277	267

Source: College of Engineering's Career Services

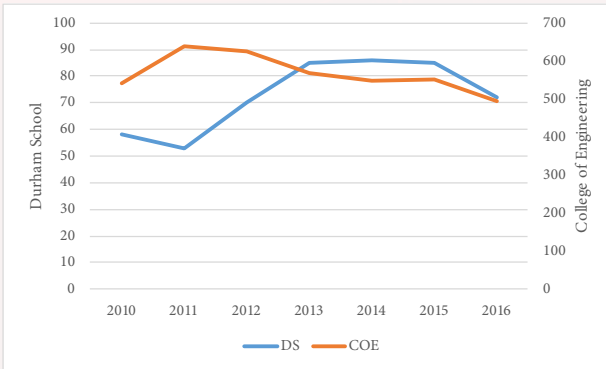




Graduate Enrollment

	Fall 2010	Fall 2011	Fall 2012	Fall 2013	Fall 2014	Fall 2015	Fall 2016
Architectural Engineering - MAE	22	38	37	42	38	33	24
Architectural Engineering - MS	15	11	7	5	5	5	7
Architectural Engineering - PhD	17	19	20	19	16	17	18
Construction - MS	7	6	10	6	4	0	1
Construction - MS (CEMT)						2	1
Construction - PhD	16	20	17	19	21	17	12
Construction - PhD (CEMT)						7	9
DSAEC	58	53	70	85	86	85	72
College of Engineering	540	638	626	568	547	553	494

Source: Institutional Research and Planning





Degrees Conferred

Undergraduate Degrees

	AY 2010-11	AY 2011-12	AY 2012-13	AY 2013-14	AY 2014-15	AY 2015-16	AY 2016-17 ‡
Architectural Engineering	47	32	35	28	26	23	26
Construction Management (Omaha)	22	24	26	23	21	27	21
Construction Management (Lincoln)	59	66	33	34	28	45	26
Construction Engineering (Omaha)	13	10	10	3	7	4	5
Construction Engineering (Lincoln)				1	2	2	2
Construction Engineering Technology*	0	2	0	1			
DSAEC	141	134	104	90	84	101	80
College of Engineering	493	506	484	533	512	531	542

Graduate Degrees

	AY 2010-11	AY 2011-12	AY 2012-13	AY 2013-14	AY 2014-15	AY 2015-16	AY 2016-17 ‡
Architectural Engineering - MAE	23	26	21	21	26	29	17
Architectural Engineering - MS	6	8	4	3	2	1	2
Architectural Engineering - PhD	2	2	5	3	4	5	2
Construction - MS	6	2	10	3	1		
Construction - MS (CEMT)					3	6	2
Construction - PhD	3	4	3	4	3	4	
Construction - PhD (CEMT)							1
DSAEC	40	42	43	34	39	45	24
College of Engineering	205	222	197	165	168	192	133

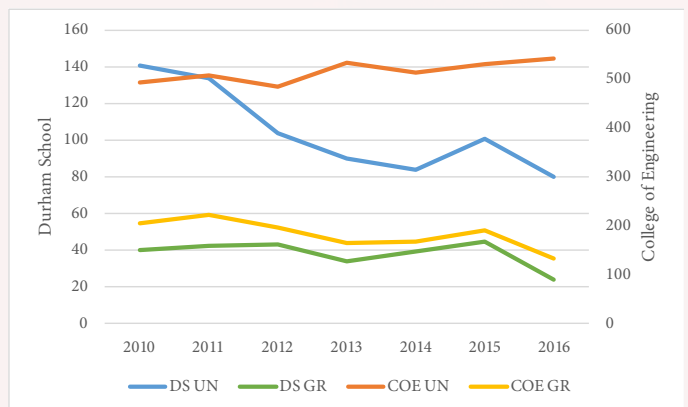
Alumni To-Date

Architectural Engineering	480+
Construction	2880+

*The Construction Engineering Technology program began its phase-out in Fall 2006 due to the transition to Construction Engineering and Construction Management on the Omaha Campus in 2005.

‡ Does not include August 2017 graduates.

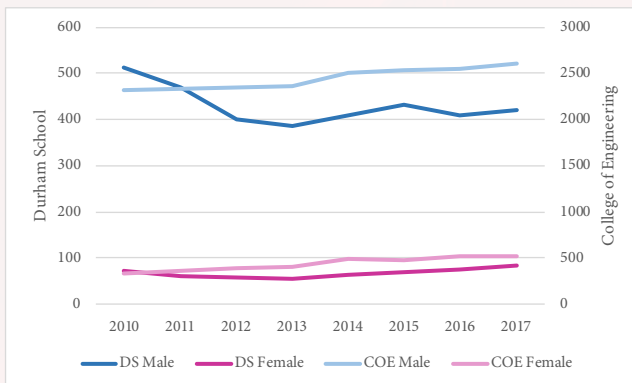
Source: Institutional Research and Planning and the College of Engineering





Gender (Undergraduate)

	Fall 2010	Fall 2011	Fall 2012	Fall 2013	Fall 2014	Fall 2015	Fall 2016	Fall 2017
Architectural Engineering								
Male	171	160	130	126	121	117	107	115
Female	50	44	42	43	46	51	53	57
Construction Management (Omaha)								
Male	103	95	89	81	81	91	82	69
Female	4	5	5	5	8	8	9	12
Construction Management (Lincoln)								
Male	192	175	147	145	160	177	173	189
Female	14	7	7	4	6	6	6	9
Construction Engineering (Omaha)								
Male	41	36	33	23	27	24	21	21
Female	4	3	3	2	3	2	3	5
Construction Engineering (Lincoln)								
Male				12	21	24	26	26
Female				0	1	2	3	2
Construction Engineering Technology*								
Male	2	0						
Female	0	1						
DSAEC								
Male	513	468	400	387	410	433	409	420
Female	72	60	57	54	64	69	74	85
College of Engineering								
Male	2313	2334	2346	2354	2507	2529	2554	2601
Female	335	358	394	405	486	479	512	516



*The Construction Engineering Technology program began its phase-out in Fall 2006 due to the transition to Construction Engineering and Construction Management on the Omaha Campus in 2005.

Source: Institutional Research and Planning





Ethnicity (Undergraduate)

DSAEC	Fall 2010	Fall 2011	Fall 2012	Fall 2013	Fall 2014	Fall 2015	Fall 2016	Fall 2017
African American/Black	15	13	9	7	6	11	14	13
Asian	5	5	4	4	3	5	4	7
Hispanic	19	23	27	19	22	21	23	29
Native American	2	0	0	0	1	1	0	0
Other (inc. Caucasian)	544	490	417	411	442	460	442	456

College of Engineering	Fall 2010	Fall 2011	Fall 2012	Fall 2013	Fall 2014	Fall 2015	Fall 2016	Fall 2017
African American/Black	56	59	48	59	69	78	78	71
Asian	73	73	74	75	76	96	92	103
Hispanic	94	102	100	101	114	125	143	168
Native American	6	3	2	3	3	3	2	4
Other (inc. Caucasian)	2419	2455	2516	2521	2731	2706	2751	2771

Source: Institutional Research and Planning





Student Competitions

- 2011 Architectural Engineering Institute Charles Pankow Student Design Competition**
Finalist Mechanical, Electrical
- 2012 Architectural Engineering Institute Charles Pankow Student Design Competition**
1st Place Structures, Mechanical
Finalist Electrical, Integration
- 2012 ASHRAE Student Design Competition**
1st Place HVAC System Design
- 2015 Architectural Engineering Institute Student Design Competition**
1st Place Electrical
Runner-up Mechanical
Finalist Structures, Integration
- 2015 ASHRAE Student Design Competition – International**
1st Place System Selection, Design Calculations
3rd Place Applied Engineering Challenge Team
**First school ever to gain top-three finishes in three categories*
- 2015 Mechanical Contractors Association of America (MCAA)**
1st Place Student Chapter Competition
- 2015 National Council of Examiners of Engineering and Surveying (NCEES) Engineering Award for Connecting Professional Practice and Education**
Prize - \$7500
- 2016 Architectural Engineering Institute Student Design Competition**
1st Place Electrical
Runner-up Mechanical, Integration
Finalist Structures
- 2016 Mechanical Contractors Association of America (MCAA)**
Final Four Student Chapter Competition
- 2016 National Council of Examiners of Engineering and Surveying (NCEES) Engineering Award for Connecting Professional Practice and Education**
Grand Prize - \$25,000
- 2017 Architectural Engineering Institute Student Design Competition**
1st Place Electrical (Team 11)
2nd Place Integration, Structures, Mechanical, Electrical (Team 13), Construction Management
Innovation Resiliency & Security, High Performance & WELL Buildings



Illuminating Engineering Society (IES) Howard Brandston Student Lighting Design Education Grant
 Durham School students received top honors in years: 2010, 2011, 2013, 2014, 2015, 2016
 Additionally, students received honorable mention awards in years: 2011, 2014, 2016





National Standardized Exams

Fundamentals of Engineering Exam

	F '10	S '11	F '11	S '12	F '12	S '13	F '13	S '14	F '14	S '15	F '15	S '16
Architectural Engineering	86%	86%	N/D	100%	86%	100%	82%	N/D	100%	100%	100%	89%
Construction Engineering	N/A	N/A	67%	33%	100%	75%	100%	N/A	N/A	100%	N/A	50%
National Average	68%	71%	N/D	70%	68%	70%	76%	N/D	72%	78%	75%	78%

American Institute of Constructors (AIC) Level 1 Exam - Associate Constructor

	F '10	S '11	F '11	S '12	F '12	S '13	F '13	S '14	F '14	S '15	F '15	S '16	F '16	S '17
Construction Management	65%	78%	75%	82%	100%	50%	N/A*	N/A*	N/A*	N/A*	N/A*	56%	65%	90%
National Average	61%	61%	54%	58%	55%	53%	N/A*	N/A*	N/A*	N/A*	N/A*	51%	N/D	N/D

N/D -- Official data unavailable

N/A -- No exams taken

*The Durham School did not require students to take the AIC exam between Fall 2013 and Fall 2015.

Source: Official FE and AIC exam reports

