

Forage: Pasture Varieties

Western Nebraska

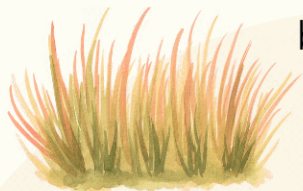
The dry climate and sandy soil lend themselves well to cool- and warm-season grasses.



big & sand bluestem



blue & sideoats grama



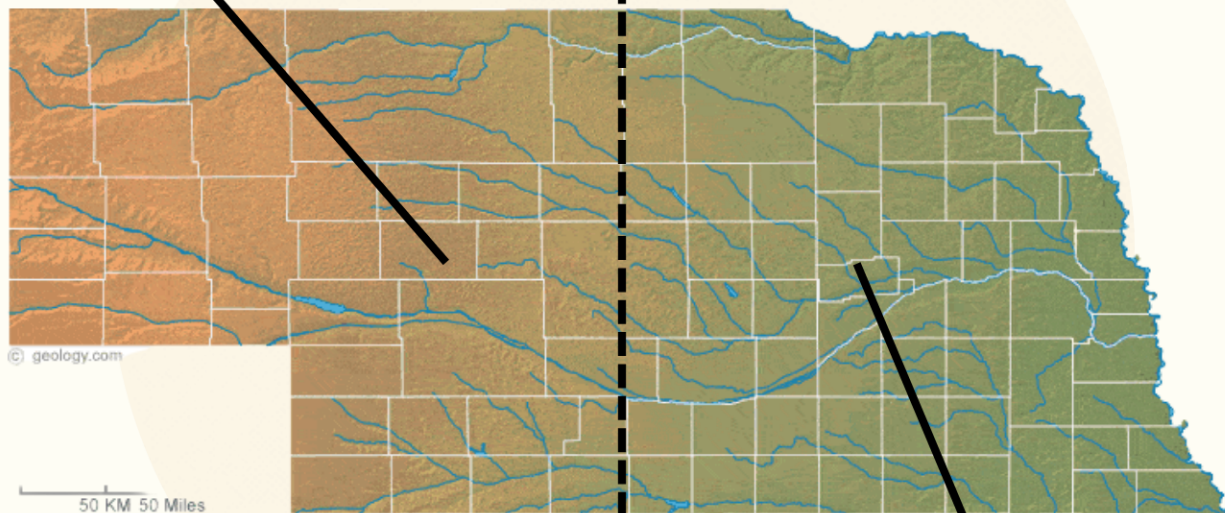
wheatgrass



sand lovegrass

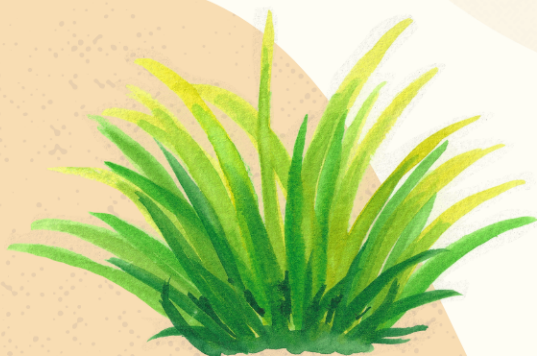


indiagrass



Eastern Nebraska

The humid climate and the predominantly clay soil is favorable to cool-season grasses.



orchard grass



smooth brome grass