

University of Nebraska-Lincoln Women's Club

Fall 2016

Upcoming Events:

September 14 – Annual Welcome Event

October 12 - Fall Tour

November 9 - Fall Brunch

January 25 – Interest Group Chair Appreciation Luncheon

February 8 - General Meeting

March 8 - General Meeting

April 5– Spring Luncheon

Inside This Issue:

Annual Welcome Event	2
Fall Tour	2
Fall Brunch	3
Newcomers & Friends	3
Fundraising	4
Officers & Board	5
Interest Groups	6
Scholarship Recipients	7
Future Newsletters	8

From the President:

Our theme for the 2016-2017 UNLWC year is “Honoring Our Heritage While Soaring Into the Future”. Thank you to Mandy Peterson, a UNL graduate, for designing the logo to go with this theme. We can learn from our past; what was successful, what should we keep, what should we let go of. This theme and logo symbolize our moving forward while honoring our past and rich heritage.



The roots of a tree are its life source. So the roots of tradition of UNLWC come from our Founders and those first early members who planted the seedling of UNLWC. We salute long-term members of UNLWC, those ladies who have held membership for more than thirty years. They gave us our roots and the beginning of this organization.

Our recent members of UNLWC, meaning members within the past five years, are our branches, giving us the opportunity to reach out and grow. These members offer UNLWC the opportunity to move on to new adventures and possibilities, adding extension and life to our organization.

Every tree has roots and branches; another vital part of the tree is the trunk, the base, the sturdy part. It is the connector between the roots and the branches. Members of UNLWC during the “tween” years, meaning less than thirty years but more than five, have helped keep this organization together through the changes that must occur for an organization to thrive and grow. They encouraged the newer members while also honoring our proud past.

The members of the Executive Board, as leaders of UNLWC, have both the responsibility and the privilege to continue to guide this organization to greater heights and achievements. The soaring birds are symbolic of all members. We all can contribute to the betterment of UNLWC.

The 2016-2017 year should be exciting times of friendship, sharing common interests, servitude, and funding current UNL student scholarships. I am so pleased to be a part of this rich tradition and future soaring with all our fine UNLWC members.

Ivette Bender, President - 2016-2017

University of Nebraska Lincoln Women's Club



Mission Statement of the UNL Women's Club

The purpose of the University of Nebraska-Lincoln Women's Club is to promote friendship among members, to strengthen their bond of common interest, and to provide service to the University including funding scholarships. Membership is open to any person with a connection to the University of Nebraska, interested in the activities, well-being and continuance of the University of Nebraska and the UNL Women's Club.

Annual Welcome Event

Fall 2016 Membership Renewal

The Annual Welcome Event on September 14, 2016 will be held at the home of President Hank and Susie Bounds. We are grateful that Susie has graciously offered to host this event at her home. Invitations from the President's Office will inform members of all the details. We look forward to seeing you there!



UNL Women's Club membership renewal process just jumped into the digital age! In mid-July, a personalized membership renewal form arrived in each current member's email account. *(Those members without access to email received a printed membership renewal form in the mail.)*

It is important to print your membership renewal form, make corrections as needed, and mail the form with your check to Treasurer Amy Kucken. Don't forget to send your dues before September 30! If you have questions, contact Membership VP Marla Kraft.

Fall Tour: Red Cloud, Nebraska Wednesday, October 12, 8:00 am - 6:00 pm

Celebrate Nebraska's Sesquicentennial

....Visit the homestead of one of the most distinguished of American novelists, Willa Cather (1873-1947), an 1895 graduate of UNL.

- Author of "My Antonia" and "O Pioneers" told in minute detail of homestead life on the slowly conquered prairies
- Pulitzer prize winner for "One of Ours" (1922)
- Inductee in the Nebraska Hall of Fame, 1962

....Tour Cather's childhood abode as well as six other significant homes

....Weather permitting, hike in the tall grass prairie the settlers traveled, enjoy the fauna and flora, and partake in a sack lunch with fellow travelers

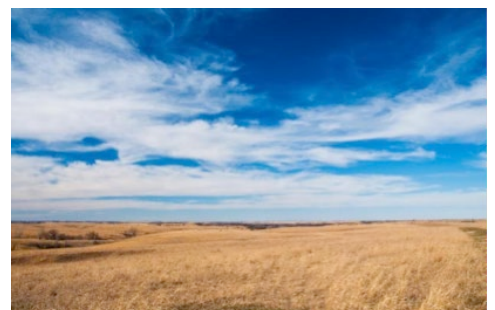
....Meet in the Red Cloud Opera House, built in 1815. Be transported back in time to set the mood, scene, and tone of the 1890s, when Willa and her friends eagerly anticipated the arrival of traveling productions such as *The Bohemian Girl* and *The Mikado*. Browse the gift shop to expand your appreciation of a great foremother.



Cost: \$56 UNLWC members \$61 non-members

Registration deadline: September 14th by using the form included in this newsletter.

Meet 8:00 am in the parking lot of Spirit of Hope Lutheran Church, 5801 NW 1st St.
Questions? Call Meredith McGowan (itinerary) or Kay Rockwell



Fall Brunch

Wednesday, November 9th

Gathering at 10:30 am
Brunch served at 11:00 am
The Landing at Williamsburg Village
3500 Faulkner Drive

Cost: \$18.00 for members
\$23.00 for non-members

Reservation Deadline: November 2nd
Make checks payable to: UNLWC

Mail using the form included in this newsletter.

If you have questions contact Beth Gobl

Newcomers & Friends:

Women new to UNL Women's Club are Newcomers for 3 years, meeting informally to have fun and get acquainted. Any UNLWC members (the "friends") are welcome to participate in the coffees and activities.

Most Wednesdays we meet for coffee and conversation at Panera Bread, Southpointe Pavillions, or occasionally at another local coffee shop. Some of the other activities we have planned are brunch at the home of Debby Portnoy, a tour of the Nebraska History Museum, and a tour of the UNL Newman Center, plus lunch at local restaurants, movies, and more!

E-mails are sent to Newcomers and Friends with details of activities. If you would like to be added to the e-mail list or have any questions, contact Debby Portnoy.



Fundraising 2016-2017 *You Can Make a Difference!*

YOU CAN MAKE A DIFFERENCE!

In 1894 the founders of the UNLWC recognized the importance of providing service to the University and to its students. It all began with a few ladies seeing a need and doing something to help. The generosity of our membership past and present have allowed UNLWC to carry on this tradition by providing scholarships to as many talented and deserving students as possible.

Our major fundraising effort again this year will focus on direct donations from our members. Last year's response from our membership was wonderful. We appreciate and thank you for all your past contributions. Now we would like to build on that previous generosity to further the mission that has been historically a part of UNLWC. A personal letter has been sent to each member asking for support in providing these scholarships. Individual participation is necessary to generate these funds and continue to fulfill the mission of our Club. Please give this your full consideration and donate as generously as you are able.

International Sun Bonnet Sue Comes to UNL

The UNLWC Piecemakers Quilt Group have so generously made and donated this beautiful quilt for us to raffle this year for our UNL Student Scholarship Fund.

The size of the quilt is 72" x 86", which is twin size.

Thank you to the Piecemakers Quilt Group for your donation!



Tickets can be purchased at all UNLWC events throughout the 2016/2017 school year, or on the form on page 7. Tickets using the form in this newsletter will be completed on your behalf and placed in the drawing. The proceeds will go toward the UNLWC Scholarship Fund. The winning ticket will be drawn at the Spring Luncheon. Need not be present to win. Ticket price-\$5.00 each or 5 for \$20.00.

In memory of a member who has passed away, a card is sent to the family expressing our sympathy and advising that a \$50 donation has been made to the UNL Women's Club Scholarship Fund in memory of their loved one.



Cards are sent to members who are hospitalized or for special events such as a significant birthday or anniversary. If you know of a member who has passed away, please advise our Courtesy Chair, Diane Mohrhoff.



Beth Goble was the lucky winner of the Amish Quilt, raffled at the 2016 UNLWC Spring Luncheon. The quilt generated \$885 for the UNLWC Scholarship Fund.

UNLWC Officers 2016-2017

President – Ivette Bender
 President Elect/Corresp. Secretary – Marion Carr
 2nd VP/Newcomers – Debby Raddatz-Portnoy
 3rd VP/Membership – Marla Kraft.
 Recording Secretary - Kelly Powell
 Treasurer - Amy Kucken



UNLWC Committee Chairs 2016-2017

Advisor/Parliamentarian	Rhonda Obermeier
Courtesy	Diane Mohrhoff
Communications/Publicity	Ivette Bender
Fall Brunch	Beth Goble
Fundraising	Theresa Cornelius
Historian	Brenda Keith
Hospitality	Jane McGinnis
Interest Groups	Rhonda Obermeier
Membership	Marla Kraft
Newsletter	Eileen Carroll
Programs	Carol Rundquist
Scholarship	Pam Walter
Spring Luncheon	Mary Beth Shomos
Telephone	LaVerne Bish
Tour	Kay Rockwell
Webmaster	Sally Wei

A donation of \$10,000 was made to the UNL Women's Club Scholarship Fund in April 2016. We can now announce that the anonymous donor of the yearly \$10,000 donations the past few years is long-time UNLWC member LaVerne Bish. With this final donation, LaVerne has generously donated a total of \$50,000 to our UNL Women's Club Scholarship Fund. UNLWC thanks LaVerne for her incredible generosity towards UNLWC Student Scholarships.

UNL Women's Club Interest Groups

Interest groups are the essence of the UNL Women's Club where our mission statement comes alive. These small groups are where acquaintances develop into friendships, common interests grow into strong bonds, and our desire to serve the University turns into action. Sign up at the Annual Welcome Event or contact the Interest Group Chair listed. If you have a new idea or are willing to help organize a new group, such as wine tasting, bunco, or some other new group, contact Rhonda Obermeier, Interest Group Chair.

Arts & Crafts meets monthly to make a craft item, 3rd Fridays at 10:00 am. Chair Beth Goble

Book Clubs are for all who enjoy reading and discussing books with friends. Each group selects books to be read.

Reading With Friends meets the 1st Wednesday at 9:30 am.
Chair Carolyn Kitterer

Chapter Two meets the 1st Tuesday at 9:30 am. Chair June Carrell

Making Meaning Together meets the 3rd Friday at 10:00 am.
Chair Pat Hurley

Bridge groups meet monthly for bridge and friendship. Most groups are open for new and substitute members.

Bridge I – 1st Thurs., 11:30 am-3:00 pm, hostess choice. Chair Mary Schkade

Bridge II – 2nd Thurs., 10:30 am, hostess choice. Play cards and eat lunch at the Grand Lodge, Chair Margie Dickinson

Bridge III – 1st Thurs., 7:00 pm. New members welcome.

Chair Jean Detlefsen, 402-483-0071, jdettefsen@neb.rr.com

Bridge Marathon – monthly (Oct.-Apr.) Chair Marilyn Bernthal,

Collectors feature the collection of a member or guest speaker and is a fun, educational experience. Members need not be a collector. Meets most months on 4th Thurs. At 10:00 am. Chair Betty Anderson

Community Outreach - Sew and/or assemble "shower belts" for mastectomy patients so that they are able to shower hands free. Members meet the 2nd Tuesday of odd months from 10:00 - 12:00 at the home of the Chair, Sheryl Hudgins

Couples Gourmet meets monthly at 6:30 pm for a dinner with the theme, recipes, and date chosen by the host. Singles welcome. Chairs Karen & Gary Heusel

Culinary Arts meets monthly with members bringing a dish of choice from a monthly theme selected by the group.

Daytime- third Wednesday, 11:30 am, Sushma Agrawal

Evening – 2nd Thursday, 6:30 pm. Chair Carol Riefler

Exercise Support Group is designed to provide support for those UNL Women's Club members who currently need support for a healthier lifestyle, which includes exercise. We meet in the front lobby of Madonna Proactive but you do not need to be a Madonna Proactive member to attend this interest group. Meets 2nd Friday at 10:00 am, Chair Priscilla Henkelmann

International Club welcomes everyone. Monthly programs or lunch outings to learn about other countries and their cultures. Chairs Rosita Moore, Kelly Powell, Kay Rockwell

Meals on Wheels delivers hot meals to the elderly and disabled on a daily basis. Volunteers needed to serve for 1-1 ½ hours monthly. Chair Chris Read

Newcomers & Friends are new members plus other members of UNLWC who wish to participate in activities. Meets most Wednesdays at 9:30 am for coffee and conversation at Panera Bread, Southpointe Pavillions or another local coffee shop. See article with information in this newsletter. Chair Debby Raddatz-Portnoy

Piecemakers quilting group meets every Tuesday, 9:30 am-noon. Lessons available to those wanting to learn. Non-quilters are encouraged to bring a needlework project and join in. Chair Jane Clegg

Travel Groups share their love of travel, adventure, experiences, and pictures from around the world. Couples and singles are welcome.

Travel I - 3rd Sunday, 7:00 pm. Chairs Sharon Sawyers and Jan Jensen.

Travel II – 4th Sunday, 1:00 pm. Chair Sue Waldren

Variety Club – Join in a different activity each time we gather (e.g. movie, lunch, discussion, volunteer opportunity, performance, etc.). Chairs Eileen Carroll and Rosita Moore

Scholarship Recipients

Once again, thanks to donor's generosity and successful fundraising activities, UNLWC has been able to award a total of \$15,000 in scholarships for the 2016-17 academic year.

Our 2016-17 scholarship recipients are: Oladapo Akinmoladun - Nutrition, Exercise and Health Sciences & Microbiology; Shayne Arriola – Marketing; Lydia Binder – Athletic Training; Julian Davis – Chemical Engineering; Paige Manes – Actuarial Science; Megan Manhein – Psychology; Nam Nguyen – Biochemistry; JaLee Pilkington - Accounting; Juana Paramo Reyes – Accounting & Finance; Savannah Schafer – Agricultural Education; Rachel Sorensen – Animal Science.

All of the scholarship recipients maintain a high GPA, are active in University extracurricular activities, and volunteer in the community. We offer our congratulations to these outstanding and deserving students. Thank you to our membership for supporting scholarships!



Three of the 2015-2016 scholarship recipients attended the Spring Luncheon. Pictured Left to Right: Pam Walter, Scholarship Committee member; Rosena Startzman, scholarship recipient; Wanda Hein, Committee Chairperson; Blade Jacobson, scholarship recipient; Alana Leman, scholarship recipient; Meredith McGowan, committee member.

FALL TOUR

Wednesday, October 12,
8:00 am – 6 pm Red Cloud, NE

Cost \$56.00 members
\$61 non-members

Reservation Deadline September 14

Make check payable to UNLWC
and mail to*:
Kay Rockwell

Can you & your guests easily walk 3
blocks? _____Y _____N

Member
Name _____

Phone _____

Guest
Name(s) _____

Guest
Phone(s) _____

Amount Enclosed: \$ _____

FALL BRUNCH

Wednesday, November 9, 10:30 am
The Landing at Williamsburg
Village
3500 Faulkner Drive

Cost \$18.00 members
\$23 non-members

Reservation Deadline November 2

Make check payable to UNLWC and
mail to*:
Beth Goble

Member
Name _____

Phone _____

Guest
Name(s) _____

Guest
Phone(s) _____

Amount Enclosed: \$ _____

QUILT RAFFLE TICKETS

Drawing to be held at the UNLWC
Spring Luncheon
April 2017

Cost \$5.00/ticket or
5 tickets for \$20.00

Proceeds will go toward the
UNLWC scholarship fund

Tickets will be completed on your
behalf and placed in the drawing

Make check payable to UNLWC and
mail to*:
Theresa Cornelius

Member
Name _____

Phone _____

Number of Tickets _____

Amount Enclosed: \$ _____

*Or mail form with one check for all items to Amy Kucken

**Successful 2015-2016 Fundraising
Thanks to UNLWC members!**

Direct Donations to UNLWC Student Scholarship Fund: \$12,256

Amish Quilt Raffle: \$885

Spring Luncheon Raffle: \$1,512

Other Fundraising: \$131

Total 2015-2016 Fundraising: \$14,784



GENTLE REMINDER!

FUTURE UNLWC NEWSLETTERS WILL BE ELECTRONIC

Following the trend of other Big Ten Women's Clubs and other social and volunteer organizations, the UNLWC newsletter will be distributed via email starting with the Spring 2017 issue. This Fall 2016 newsletter will be the last issue mailed to all members. At the January 27, 2016 UNLWC Board meeting the Board voted to change to email-only distribution for the UNLWC newsletter beginning with the Spring 2017 newsletter. Those members who do not have email access will receive a print copy. Some printed copies will be available for guests at club events. Watch for the Spring 2017 newsletter to arrive in your inbox rather than your mailbox!



www.unl.edu/womensclub

ADDRESS SERVICE REQUESTED

UNL Women's Club
c/o Mail & Distribution Service
University of Nebraska-Lincoln
1100 N. 17th Street
PO Box 880699
Lincoln, NE 68588-0699

Non-Profit
US Postage
PAID
UNL